



## **OPERATOR'S MANUAL AND PARTS LIST PETROL BRUSHCUTTER - THBC43**

Spares & Support: 01793 333212

[www.thehandy.co.uk](http://www.thehandy.co.uk)

**Before use please read & understand this manual, paying particular attention to the safety instructions.**

# CONTENTS

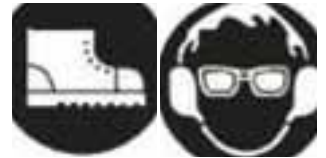
SAFETY INSTRUCTIONS	3
MAJOR PARTS	4
FUEL	5
SPECIFICATIONS	5
ASSEMBLY	6-7
OPERATION	8
REPLACEMENT OF LINE	9
HINTS AND TIPS	10
MAINTENANCE	11
PARTS DIAGRAMS AND LISTS	12-15
EC DECLARATION OF CONFORMITY	16

# SAFETY INSTRUCTIONS

**Read and understand the owner's manual and labels affixed to the brushcutter. Learn its application and limitations as well as the specific potential hazards. Retain these instructions for reference.**

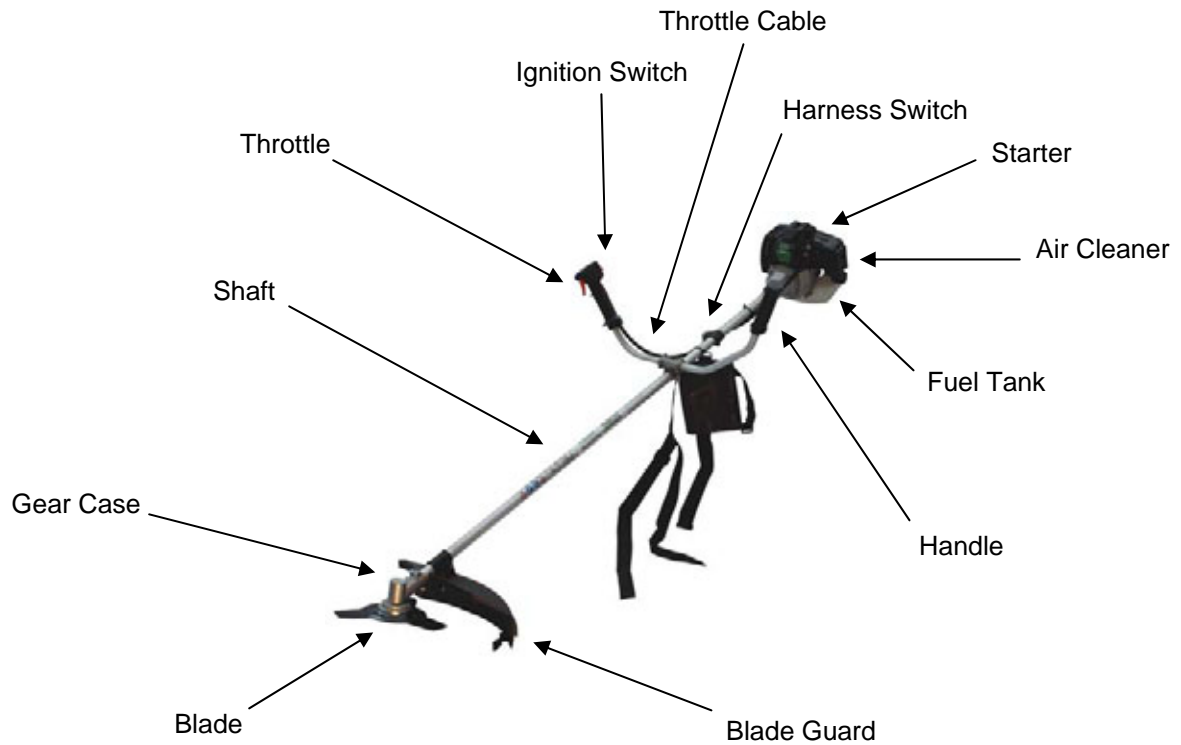


- Use sturdy footwear and a helmet with eye and ear protection. Protect exposed parts of your body. Wear heavy duty gloves, preferably made of leather.
- Do **not** operate the brushcutter if you are tired, ill or under the influence of alcohol or drugs.
- Do **not** smoke when using the brushcutter and ensure caution when handling fuel. We recommend you fuel the machine at least 3m away from where you wish to work in case any spilt fuel ignites when starting the engine.
- Ensure that bystanders, children and pets stay at a safe distance of at least 15m when starting or cutting.
- Inspect the brushcutter, and in particular the cutting blade, before use for any worn or damaged parts. Do not use until the parts are repaired or replaced.
- Before starting the engine make sure the blade is not in contact with anything and have a clear work area and a secure footing.
- Hold the brushcutter firmly with both hands when using and keep all parts of your body away from the machine. Always ensure a safe, firm footing and do not over-reach or work above your waist.
- Always carry the brushcutter with the engine stopped.
- **Never** lay the brushcutter down while hot on dry grass or any other combustible material where there is a fire risk from the hot engine.
- Only use the brushcutter in good light and visibility. During cold weather be aware of slippery or wet areas.
- Limit the amount of time over which the brushcutter is to used continuously - about 30-40 minutes per session, taking 10-15 minutes break. Try to keep the total amount of work performed in a day to under 2 hours.
- Please recycle the cardboard packaging in which the brushcutter is delivered.

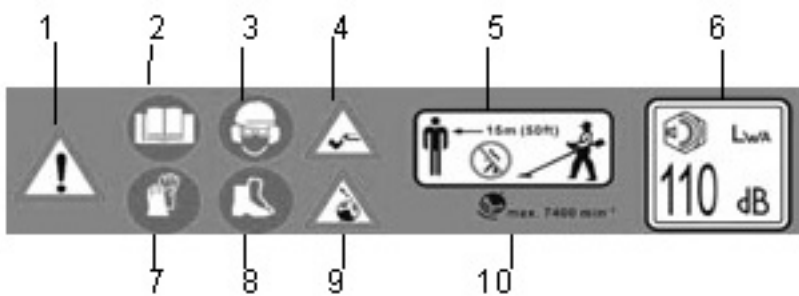


**Always shut off the engine before setting it down.**

# MAJOR PARTS DIAGRAM



## Warning Labels on Machine



1	Warning!
2	Read Owners Manual
3	Wear Head Protection
4	Keep Feet away from Cutter
5	Keep Bystanders away
6	Sound Power Level
7	Wear Strong Gloves
8	Wear Safety Boots
9	Keep Hands away from Cutter
10	Max. allowed RPM

# FUEL

**Petrol is very flammable. Do not smoke while using the brushcutter or refuel the brushcutter near a flame or sparks. Allow the engine to cool before re-fuelling. Fuel the engine at least 3m away from your work area.**



- Use a ratio of 25:1 unleaded petrol to 2-stroke mineral oil. For synthetic or or semi-synthetic use the oil manufacturer's ratio. Mix in the mixing bottle.
- Unscrew the fuel cap, and fuel the machine to 80% capacity. Fasten the fuel cap tightly and wipe up any spillage.
- Ensure that any stored petrol/oil mixture (2-stroke) is clearly marked in a separate can and only stored for 4-6 weeks. If the brushcutter is not going to be used for a long period, drain the mixture from the fuel tank, start the engine and drain the carburettor of any remaining fuel.
- Dispose of any unwanted 2-stroke mixture at an authorised recycling point.

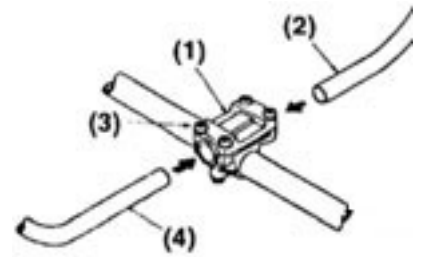
# SPECIFICATION

<b>Model</b>	<b>THBC43</b>
Blade	3T
Engine	Air Cooled 2-stroke
Displacement	42.7cm <sup>3</sup>
Starter	Recoil
Fuel	Unleaded Petrol and 2 Stroke Oil
Fuel Tank Capacity	1.2 litres
Weight	7.8 kg

# ASSEMBLY

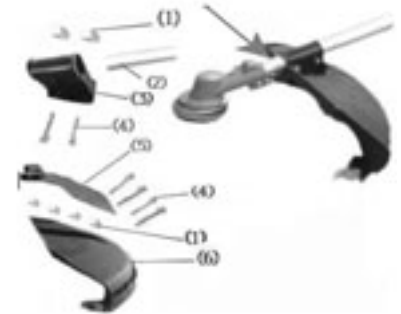
## Attach the Handle:

- Loosen the four bolts (3) on the handle bracket (1).
- Insert the right handle (2) (throttle lever is attached) and the left handle assembly (4) into the bracket and retighten the bolts securely.



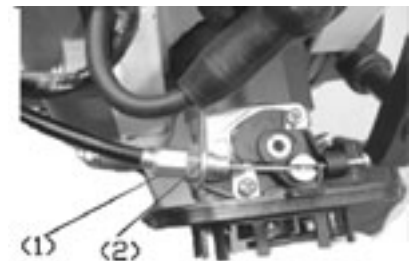
## Safety Guard:

- Attach the safety guard (6) as shown and fix securely using the four bolts M5x25 supplied.



## Adjusting the Throttle Cable:

- After releasing the throttle lever, pull the throttle cable.
- The normal play is 1 or 2 mm when measured at the carburettor side end.
- If the play is too short or long, take off the air cleaner cover, loosen the locknut (1) and adjust (2).

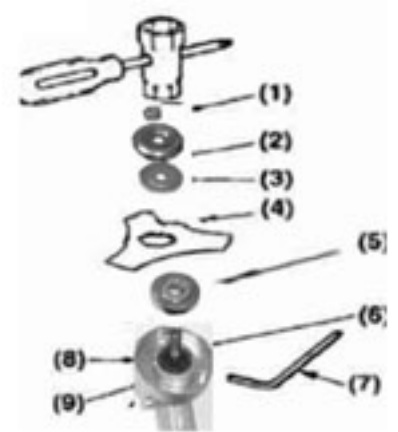


# ASSEMBLY, cont'd

## Attaching the Metal Blade:

- Lay the brushcutter on its back.
- Insert the allen key (7) into the gear shaft, line up the holes in the blade holder and the cover to stop the shaft turning.
- Place the blade onto the upper blade holder (5) and centre.
- Place washer (3), then lower blade holder (2) and finally the nut (1). Screw in an **anti-clockwise** direction and tighten using the box spanner.
- Release the allen key.

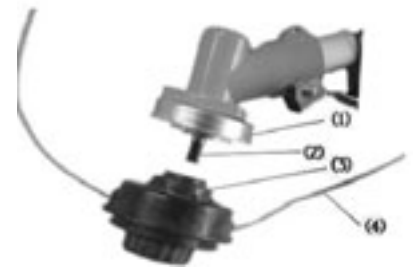
**Note: to undo the nut to change the blade, turn clockwise.**



## Attaching the Line Trimmer Head:

- Lay the brushcutter on its back.
- Insert the allen key into the gear shaft as before to stop the shaft turning.
- Remove the washer (3 in pic above) but leave washer (5) on the shaft.
- Screw the nylon head (3) **anti-clockwise** onto the threaded shaft (2) and tighten manually.
- Release the allen key.

**Note: to remove the trimmer head, turn clockwise.**



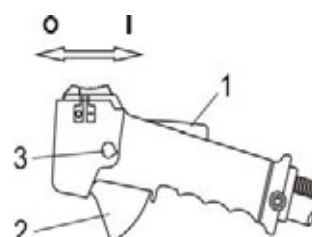
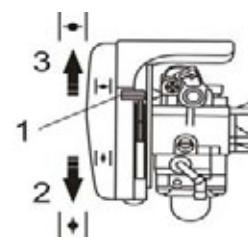
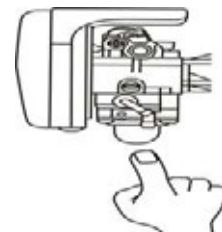
# OPERATION

## Before Starting The Engine

Check for loose screws and nuts and fill with properly mixed fuel. Place the engine on stable ground with the engine stand (fuel tank) and the guard resting on the ground.

## To Start A Cold Engine

1. Push the priming pump 5 times.
2. Fully close the choke lever.
3. Set the switch to the I position.
4. Hold the trimmer shaft near the engine firmly and pull the starter strongly.
5. When ignition is heard, reset the choke and pull the starter.
6. Warm up the engine for about 3 minutes.
7. When the engine has started at the initial ignition open the choke lever gradually.



## To Start A Warm Engine

1. Fully open the choke lever.
2. Push the priming pump 5 times.
3. Hold the handle and depress the throttle trigger. Release the throttle trigger while pushing the throttle lock button on the handle.
4. Set the switch to the I position.
5. Hold the trimmer shaft near the engine firmly and pull the starter strongly.
6. If the engine does not start, repeat the procedure for starting a cold engine.

## CAUTION

1. After starting the engine, accelerate and decelerate the engine several times by opening and closing the throttle trigger.
2. Air in the carburetor causes poor acceleration or engine stoppage.
3. Re-fuel before the fuel is used up. Starting the engine after using all of the fuel is very difficult.

## Stopping

Do not suddenly stop the engine when operating the machine at high speeds. Gradually release the throttle trigger and idle the engine before setting the switch to STOP.

## CAUTION

Do not operate the engine at high speeds with no load on the cutting attachment, especially when the engine is new. When operated at high speeds with no load, it will accelerate to an excessively high speed that might harm the engine.



## Attaching the Harness

Attach the clip on the harness to the loop on the control handle and adjust to suit the operator.



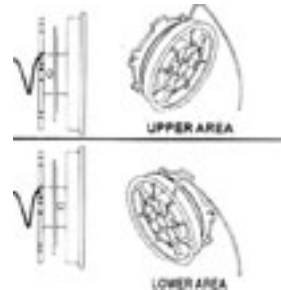
# REPLACEMENT OF LINE

Follow these steps to replace the cutting line.

- Stop the engine.
- Lay the trimmer on the floor so that the cutting head is facing up.
- Squeeze the head on both sides at right angles to the eyelets.
- Remove the empty spool being careful not to lose the spring behind the head.
- Clean the head thoroughly and inspect for any worn or damaged parts.

To reload the spool with line:

- Cut two lengths of spare line 3 metres long.
- Position each line in the two holes located in the centre of the spool and wind in the direction of the arrow on the spool.
- Wind the line on until you have about 15cm left.
- Secure the lines into the slots on the spool.
- Replace the spring and reposition the spool with the two cords in the eyelets.
- Close the spool making sure it snaps together.
- Release the lines from the spool by sharply pulling each line while pushing down on the spool.



# HINTS AND TIPS

## **Using the Metal Blade:**

Use the metal blade attachment for cutting thicker grass, weeds and undergrowth. Adjust the cutting speed to suit the material to be cut. Grass at medium speed and thick weeds and shrubs at high speed.

If you operate at low speed there is a greater chance of weeds and twigs getting caught around the blade.

Use the brushcutter like a scythe - sweep it to the right and left just above ground level when cutting grass and light brush.

## **Using the Line Trimmer Head:**

Use the nylon head for cutting grass around fence posts and trees where a metal blade could become damaged.

When the two nylon cords become too short, accelerate the engine and bump the nylon head on the ground. The two cords will automatically feed out and be cut off at the correct length by the blade on the guard.

# MAINTENANCE

To ensure a long service life and to avoid any damage to the brushcutter, perform the following maintenance at regular intervals.

## **Air Filter:**

Check and clean the Air Filter regularly to ensure optimum performance. Remove the air filter cover, take out the element and wash in lukewarm water. Allow to dry completely and then replace. Clean off any excessive dirt and dust.

## **Fuel Filter:**

Take the filter out of the fuelling port using a small wire hook. Disconnect the filter assembly from the fuel pipe and unhook the retainer to disassemble it. Clean the components with petrol.

## **Spark Plug:**

Check the spark plug periodically and ensure that the gap between the electrodes is between 0.6 and 0.7mm. Adjust where necessary using the universal wrench supplied. If the spark plug is clogged with carbon, clean thoroughly or replace with an NGK BM6A or Champion CJ8.

## **Grease:**

Apply multipurpose grease to the gear head after every 25 hours of use.

## **Idle Adjustment Screw:**

If the blade continues to run on when you release the throttle lever or the engine stops, it may be necessary to adjust the Idle Adjustment Screw.

Turning it clockwise increases the engine speed and turning it anti-clockwise decreases the speed.

## **Storage:**

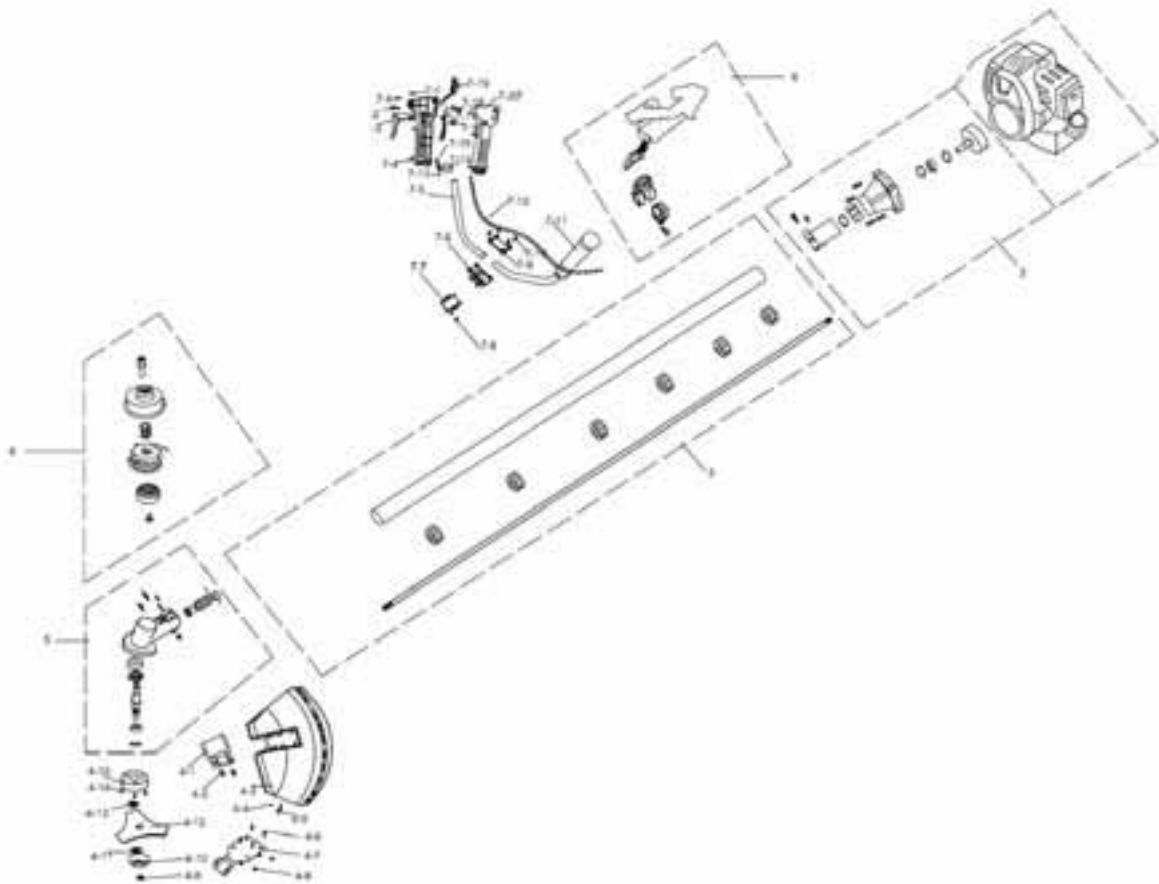
When storing the brushcutter for any length of time it is important to drain down the fuel, both in the tank and the carburettor. Either drain the fuel manually or run the engine until it uses up all the fuel.

Remove the spark plug and add a few drops of oil into the spark plug hole.

Pull the starter cord gently to confirm that a film of oil covers the engine inside.

Tighten the spark plug. Clean dirt or dust from the cutter blade and the outside of the machine and wipe with an oily cloth. Store in a dry place.

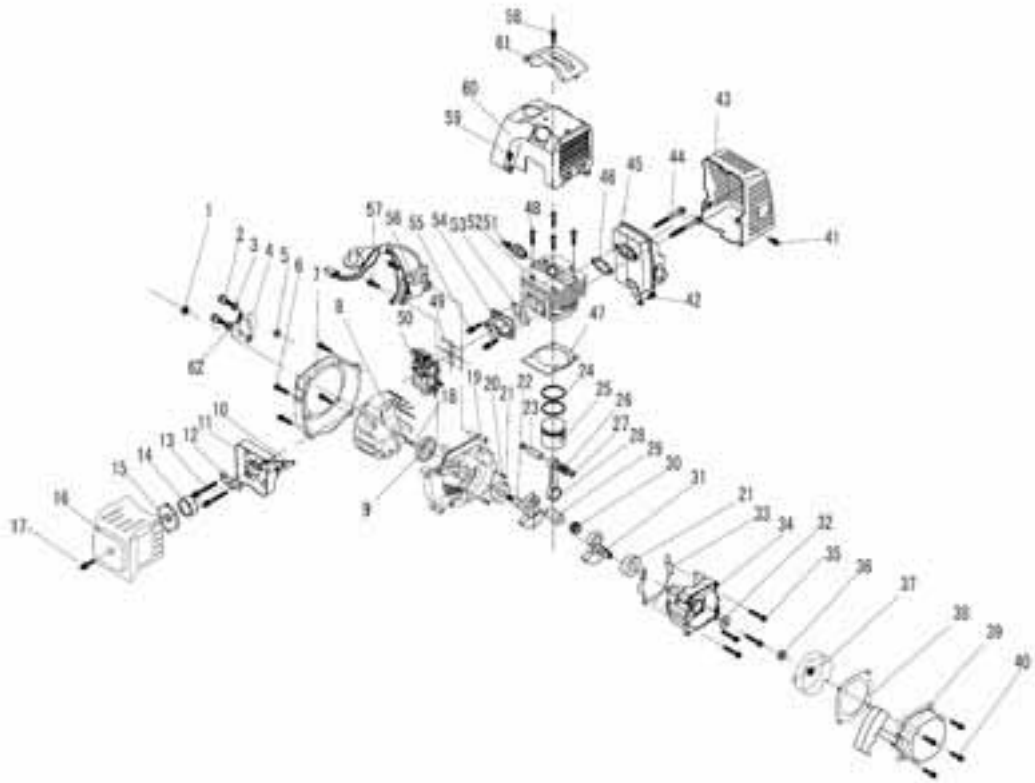
# PARTS DIAGRAM- DRIVE UNIT



# PARTS LIST - DRIVE UNIT

No	Part No	Description	Qty
1	TH119-1	Engine	1
2	TH119-2	Housing Assembly	1
3	TH119-3	Pipe Comp	1
4-1	TH119-4-1	Bracket	1
4-2	TH119-4-2	Bolt M5x25	2
4-3	TH119-4-3	Guard	1
4-4	TH119-4-4	Screw	1
4-5	TH119-4-5	Blade	1
4-6	TH119-4-6	Bolt M5x25	4
4-7	TH119-4-7	Plate	1
4-8	TH119-4-8	Nut M5	4
4-9	TH119-4-9	Nut M10	1
4-10	TH119-4-10	Protector	1
4-11	TH119-4-11	Boss	1
4-12	TH119-4-12	Blade	1
4-13	TH119-4-13	Boss	1
4-14	TH119-4-14	Screws	1
5	TH119-5	Gearcase Assembly	1
6	TH119-6	Cam Tap Head	1
7-1	TH119-7-1	Screw ST3.5x16	2
7-2	TH119-7-2	Bolt	1
7-3	TH119-7-3	Throttle Lever	1
7-4	TH119-7-4	Handle Cover Right	1
7-5	TH119-7-5	Handle Pipe Right Hand	1
7-6	TH119-7-6	Handle Bracket Centre	1
7-7	TH119-7-7	Handle Bracket Lower	1
7-8	TH119-7-8	Bolt M5x25	4
7-9	TH119-7-9	Handle Bracket Upper	1
7-10	TH119-7-10	Bolt	2
7-11	TH119-7-11	Handle grip	1
7-12	TH119-7-12	Throttle Cable	1
7-13	TH119-7-13	Nut M5	1
7-14	TH119-7-14	Clamp	1
7-15	TH119-7-15	Bolt M7x20	1
7-16	TH119-7-16	Spring	1
7-17	TH119-7-17	Safety Lever	1
7-18	TH119-7-18	Button	1
7-19	TH119-7-19	Switch Assembly	1
7-20	TH119-7-20	Handle Cover Left	1
8	TH119-8	Harness Assembly	1

# PARTS DIAGRAM- ENGINE



# PARTS LIST - ENGINE

No	Part No	Description	Qty	No	Part No	Description	Qty
1	TH120-1	Nut	1	32	TH120-32	Oil Seal	1
2	TH120-2	Bolt	2	33	TH120-33	Gasket, Case	1
3	TH120-3	Washer	2	34	TH120-34	Crackcase Right	1
4	TH120-4	Shoe Clutch	1	35	TH120-35	Screw	4
5	TH120-5	Washer	2	36	TH120-36	Washer	1
6	TH120-6	Bolt	4	37	TH120-37	Pulley	1
7	TH120-7	Cover	1	38	TH120-38	Gasket	1
8	TH120-8	Rotor	1	39	TH120-39	Recoil Assembly	1
9	TH120-9	Oil Seal	1	40	TH120-40	Screw	4
10	TH120-10	Lever choke	1	41	TH120-41	Screw	1
11	TH120-11	Body Assembly	1	42	TH120-42	Screw	1
12	TH120-12	Plate	1	43	TH120-43	Cover	1
13	TH120-13	Screw	2	44	TH120-44	Bolt	2
14	TH120-14	Element	1	45	TH120-45	Muffler assembly	1
15	TH120-15	Plate	1	46	TH120-46	Plate	1
16	TH120-16	Cover Assembly	1	47	TH120-47	Gasket Base	1
17	TH120-17	Screw	1	48	TH120-48	Bolt	4
18	TH120-18	Key	1	49	TH120-49	Plate	1
19	TH120-19	Crankcase Left	1	50	TH120-50	Carburettor	1
20	TH120-20	Pin	2	51	TH120-51	Spark Plug	1
21	TH120-21	Bearing	2	52	TH120-52	Cylinder	1
22	TH120-22	Crankshaft Left	1	53	TH120-53	Gasket Insulator	1
23	TH120-23	Pin	1	54	TH120-54	Insulator	1
24	TH120-24	Ring	2	55	TH120-55	Screw	2
25	TH120-25	Piston	1	56	TH120-56	Coil Assembly	1
26	TH120-26	Bearing	1	57	TH120-57	Screw	2
27	TH120-27	Ring	2	58	TH120-58	Screw	1
28	TH120-28	Link	1	59	TH120-59	Screw	1
29	TH120-29	Crank Pin	1	60	TH120-60	Cover	1
30	TH120-30	Bearing	1	61	TH120-61	Grommet	1
31	TH120-31	Crankshaft Right	1	62	TH120-62	Clutch Spring	1



## EC Declaration of Conformity

We, Importer  
**Handy Distribution Ltd.**  
**SN3 4NS**

Declare that the product  
**Designation: 42.7CC BRUSH CUTTER**  
**Model: THBC43**

Complies with the following directives:  
**2006/42/EC**- Machinery Directive  
**2004/108/EC**- Electromagnetic Compatibility Directive  
**2000/14/EC amended by 2005/88/EC**- Noise Emission in the Environment by Equipment for  
Use Outdoors Directive.

The conformity assessment procedure followed was in according with Annex V of the  
**Directive 2000/14/EC.**

Name of the Notified Body: Intertek Testing Services Shanghai Ltd.  
Address: Building No. 86, 1198 Qingzhou Road(North), Caihejing Development Zone,  
Shanghai 200233, P.R.China.

**-Measured Sound Pressure Level: 105.7 dB (A)**  
**-Guaranteed Sound Power Level: 110 dB (A)**

Standards and technical specifications referred to:  
**EN ISO 11806:2008**  
**EN ISO 14982:1998**  
**EN ISO 3744:1995**  
**ISO 11094:1991**

**Authorised signatory and technical file holder**

Date: 24/11/2010

Signature: 

Name / title: Mr. Simon Belcher / Managing Director  
Hobley Drive, Stratton St Margaret, Swindon, Wiltshire, SN3 4NS.